

Art Template for White/Paper t6

Vissually Stunning Plastic or Paper cup.

Live Area: ALL critical text or images must be within the green outline. 9.87x2.91

- If there is a lid on the cup;

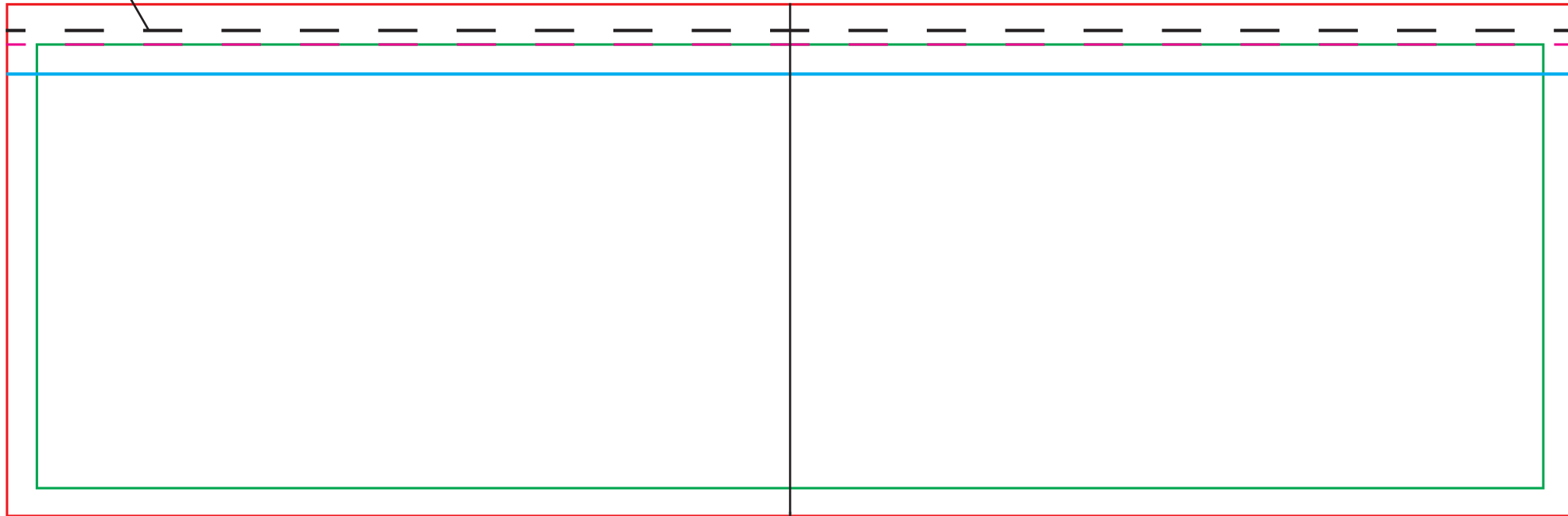
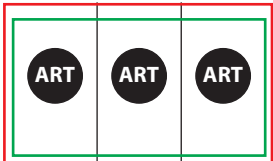
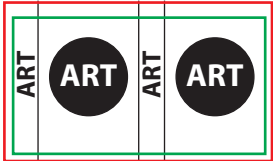
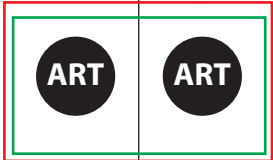
P2 Lid: Keep critical text or images below the cyan line.

All Other Lids: Keep critical text or images below the magenta line.

Total Print Area: The red outline. For art with a full bleed, art must extend out to the red outline. 10.26x3.36

This is the cup rim line.

Common art layouts.



Center Line