

Art Template for Clear T5 Visually Stunning Plastic cup.

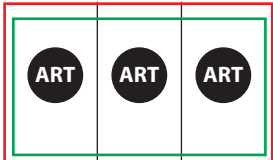
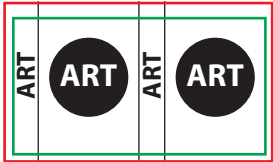
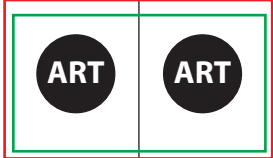
Live Area: ALL critical text or images must be within the green outline. 7.9x1.43
- If there is a lid on the cup;

All Other Lids: Keep critical text or images below the magenta line.

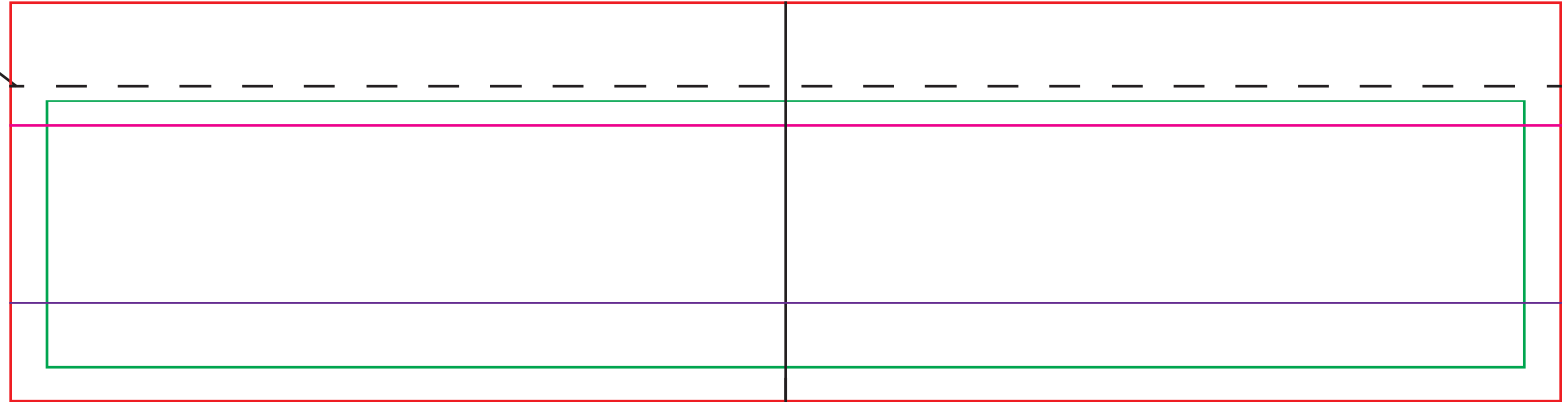
White Plate: All art below the purple line must have solid white behind it.

Total Print Area: The red outline. For art with a full bleed, art must extend out to the red outline. 8.29x2.14

Common art layouts.



This is the cup rim line.



Center Line