

# Art Template for White/Paper T3

## Vissually Stunning Plastic or Paper cup.

**Live Area:** ALL critical text or images must be within the green outline. 6.63x1.13

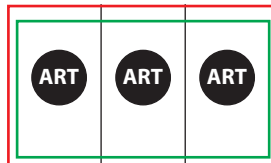
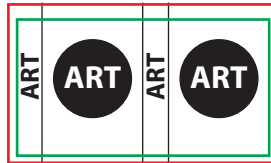
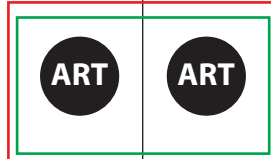
- If there is a lid on the cup;

P2 Lid: Keep critical text or images below the cyan line.

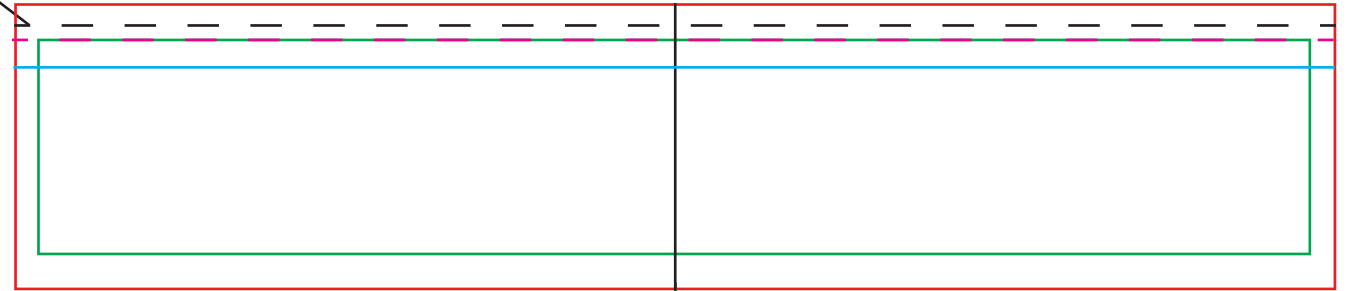
All Other Lids: Keep critical text or images below the magenta line.

**Total Print Area:** The red outline. For art with a full bleed, art must extend out to the red outline. 6.88x1.5

### Common art layouts.



This is the cup rim line.



Center Line