

# Art Template for White/Paper s2

## Vissually Stunning Plastic or Paper cup.

**Live Area:** ALL critical text or images must be within the green outline. 9.72x2.33

- If there is a lid on the cup;

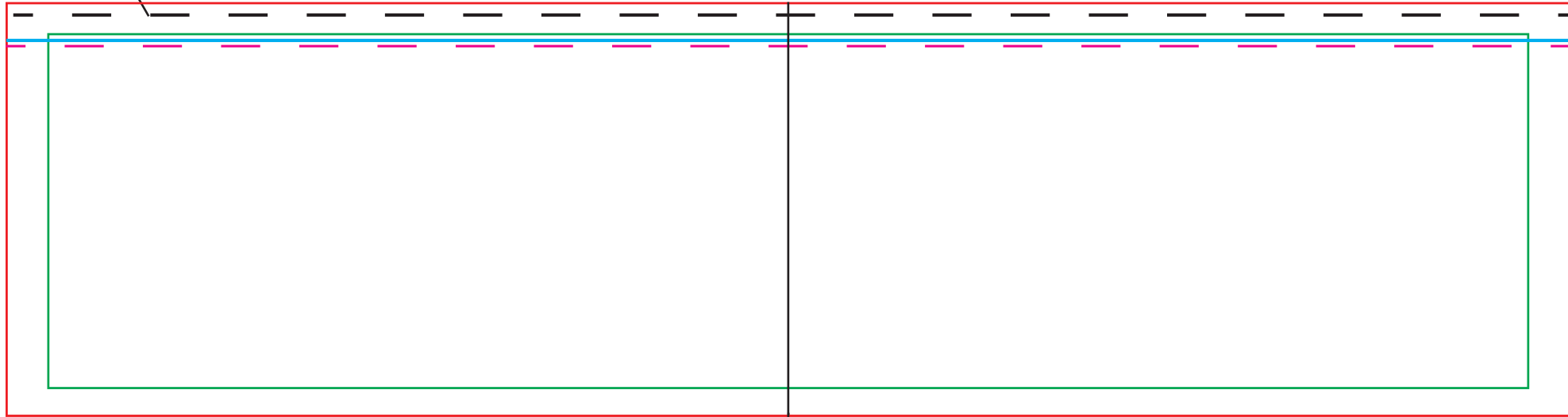
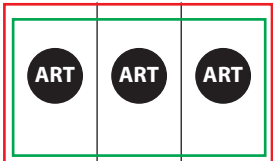
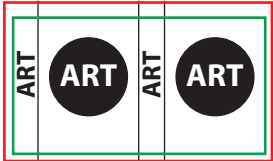
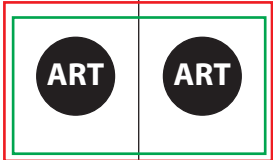
P2 Lid: Keep critical text or images below the cyan line.

All Other Lids: Keep critical text or images below the magenta line.

**Total Print Area:** The red outline. For art with a full bleed, art must extend out to the red outline. 10.26x2.71

### Common art layouts.

This is the cup rim line.



Center Line