

Art Template for White/Paper R4 Vissually Stunning Paper cup.

Live Area: ALL critical text or images must be within the green outline. 8.05x 3.04

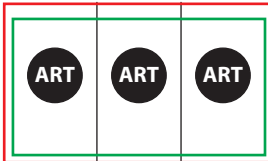
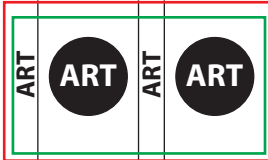
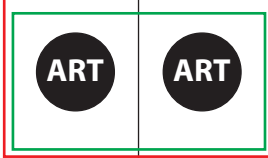
- If there is a lid on the cup;

P2 Lid: Keep critical text or images below the cyan line.

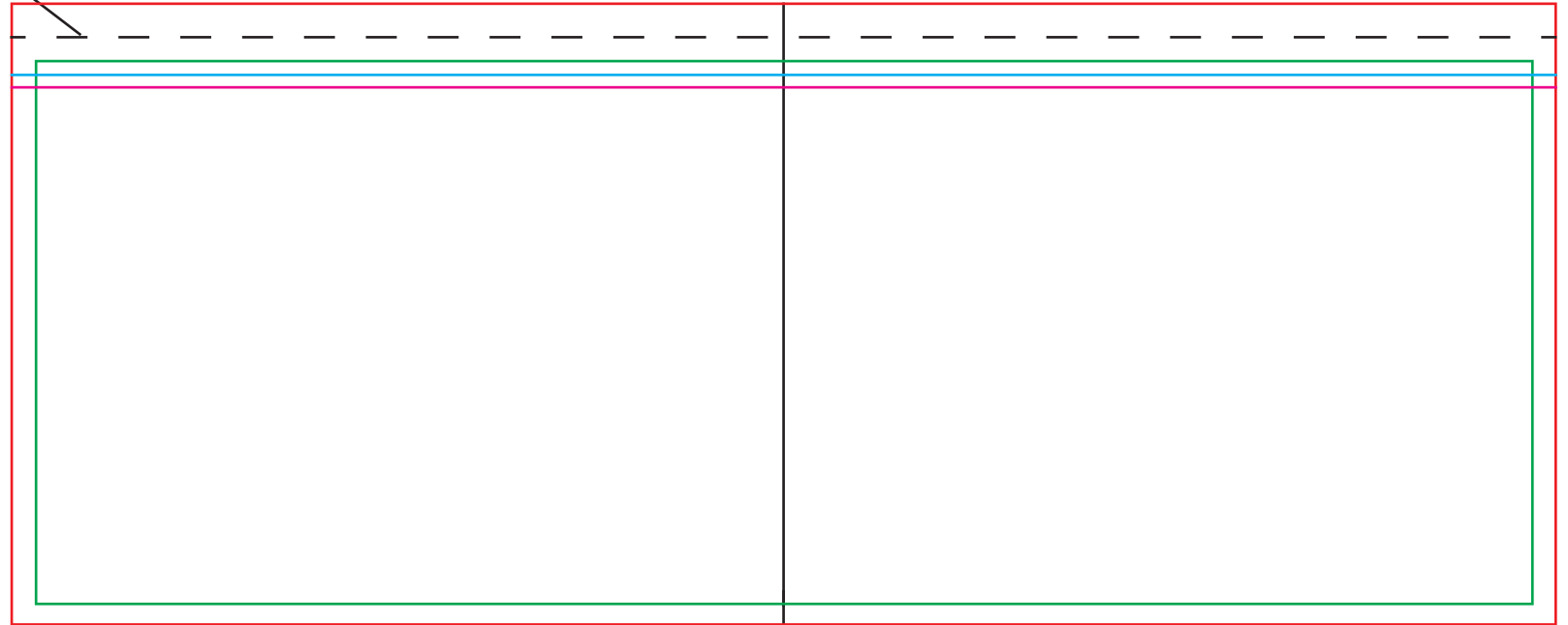
All Other Lids: Keep critical text or images below the magenta line.

Total Print Area: The red outline. For art with a full bleed, art must extend out to the red outline. 8.31x3.35

Common art layouts.



This is the cup rim line.



Center Line