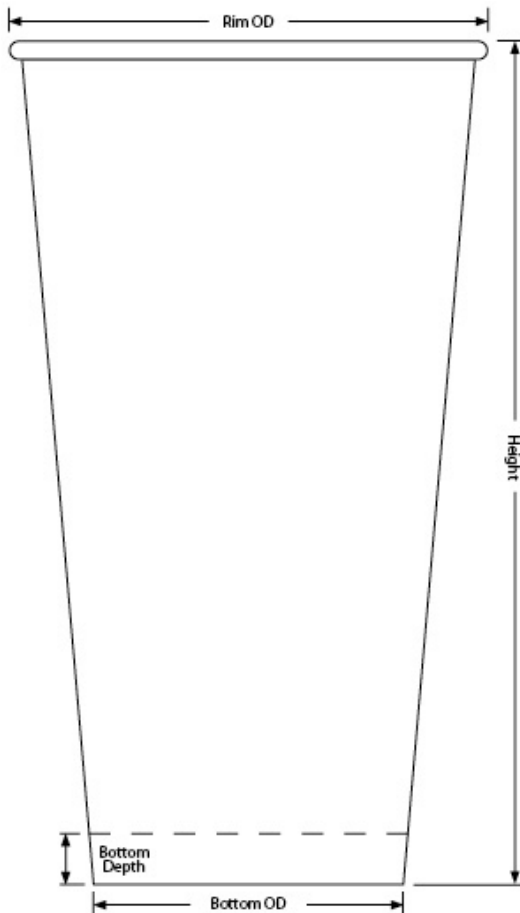




# C932 32oz Drink Cup (32)

32oz Recycled Paper COLD Cup



---

**Capacity:** 32.56oz / 963.00ml

---

**Material:** 17.5pt Recycled Paper, Poly 2-sides, 35% Sustana  
EnviroLife Post-Consumer Recycled Fiber, FSC SFI  
PEFC Certified

---

**Minimum:** 2,000 pieces

---

**Height:** 7.269"  $\pm$ .015

---

**Rim Height:** 0.150"  $\pm$ .010

---

**Rim OD:** 4.124"  $\pm$ .010

---

**Bottom OD:** 2.665"  $\pm$ .010

---

**Bottom Depth:** 0.414"  $\pm$ .010

---

**Shipping:** FOB NV Made in the USA

---

32oz Drink Cup (32) available in [Cold Paper](#) [Clear Plastic](#)

---

## C932 Standard Case Pack Configuration

Box Dimensions: 23.35"x15.75"x17.31"

Box Volume: 3.68 Cubic Feet

Box Weight: 27 lbs

Box Content: 500 Pieces

Pallet Dimensions: 40.00"x48.00"x92"

Pallet Weight: 720 lbs

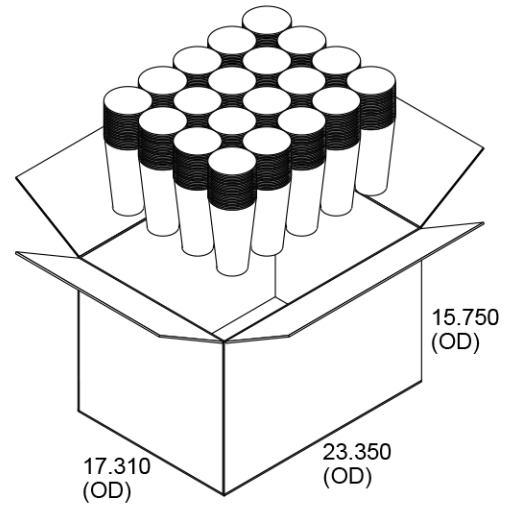
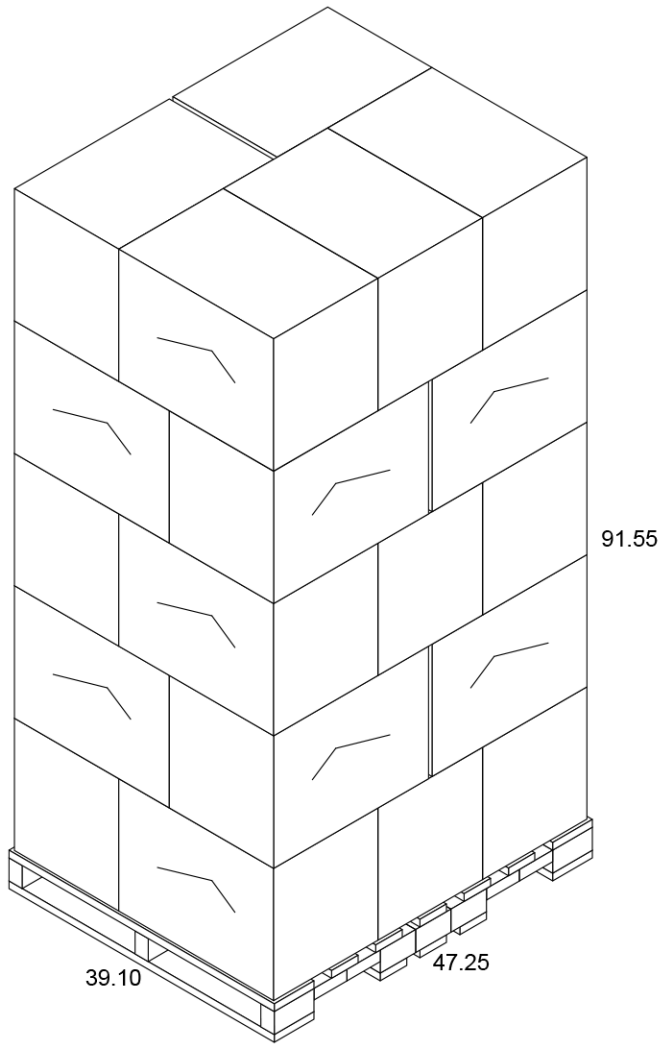
Pallet Content: 12,500 Pieces / 25 Boxes

SEE LID OPTIONS ON LAST PAGE

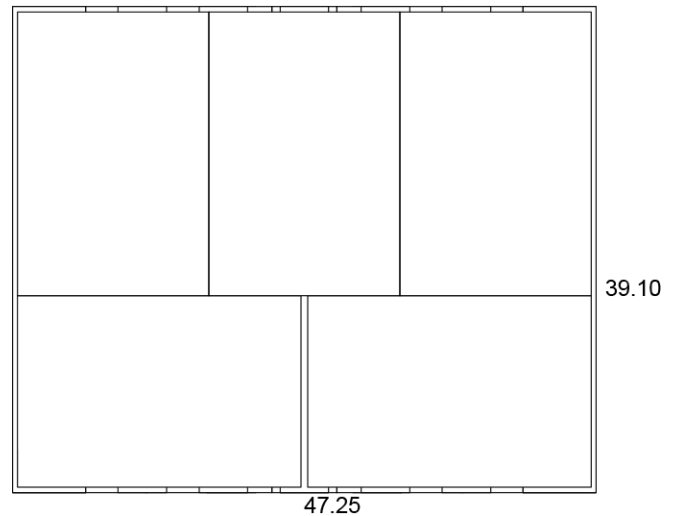
# Pallet for C932 (Gloss), M932 (Matte)

## 32oz Recycled Paper COLD Cup

Pallet View



Top View





## Lid Options for C932 (Gloss), M932 (Matte) 32oz Recycled Paper COLD Cup



### Reusable Basic Lid

- Reusable, injection molded
- Black & white standard
- Available in red
- With straw slot
- Case: 1,000 - 19 lbs



### Clear Single-Use Lid

- Clear, thermo-formed
- With & without straw slot
- Case: 1,000 - 9 lbs